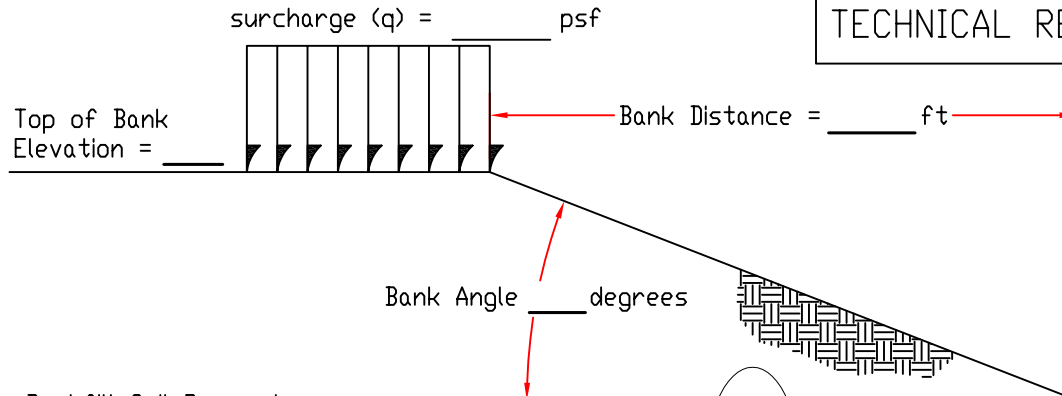


# TECHNICAL REQUEST FORM

Project Name:	
Address:	
City, State, Zip	
Phone:	
Fax:	
e-mail:	

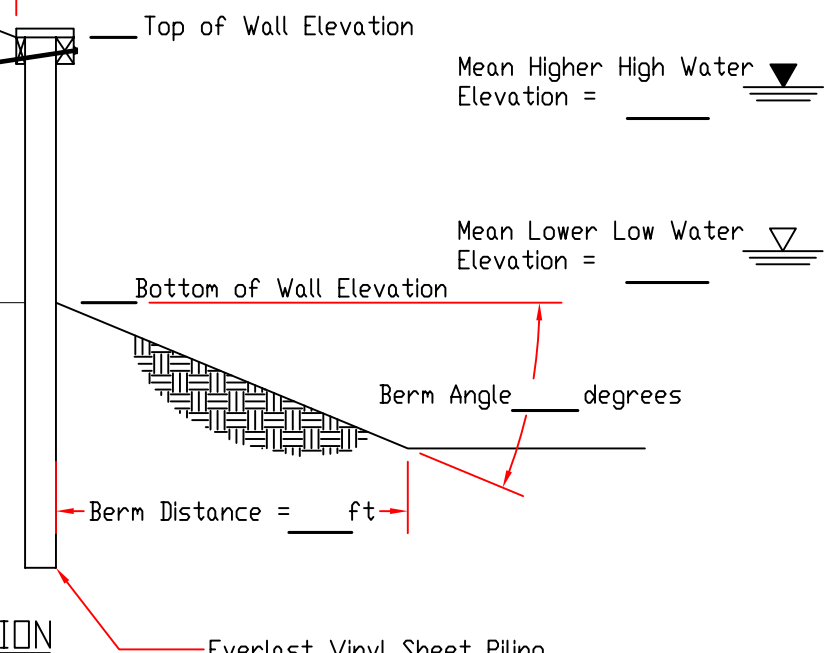
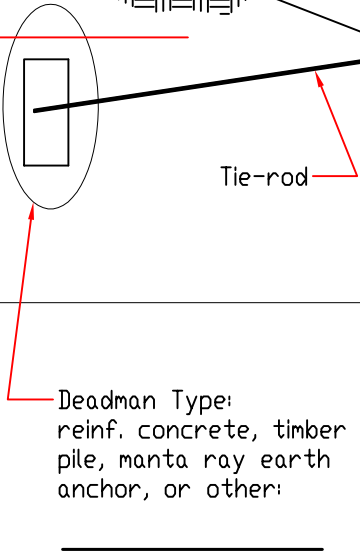


**Backfill Soil Parameters:**

Type/Description =		
$\phi$ =		°
$\gamma$ (unit weight, insitu) =		pcf
$\gamma'$ (unit weight, submerged) =		pcf
c =		psf
N (SPT) =		blows/ft

**Foundation Soil Parameters:**

Type/Description =		
$\phi$ =		°
$\gamma$ (unit weight, insitu) =		pcf
$\gamma'$ (unit weight, submerged) =		pcf
c =		psf
N (SPT) =		blows/ft



## TYPICAL SECTION



Everlast Synthetic Products, LLC (ESP) will provide information (including technical and engineering data, details, procedures, and results) based on the information provided in the "Technical Request Form" for the specified project in accordance with recognized contracting and/or engineering principles, and are for general information purposes only. While every effort has been made to insure its accuracy, this information should not be used or relied upon without an independent competent professional examination by an outside professional engineer who can verify its accuracy, suitability and applicability. Accuracy and completeness of the information provided on the "Technical Request Form" is the responsibility of the owner or their representative. ESP assumes no liability for incomplete or inaccurate information provided by others or information ESP assumes to be correct in order to complete its evaluation. It is the sole responsibility of the owner or their representative to verify the accuracy of all information on the "Technical Request Form". Anyone making use of this "Technical Request Form" does so at his/her own risk and assumes any and all liability resulting from such use. The entire risk as to quality or usability of the resulting data is with the user. In no event will ESP or their representatives be held liable for any damages including lost profits, lost savings or other incidental or consequential damages arising from the use of or inability to use the information provided by ESP.

User/Owner (print): \_\_\_\_\_

Signature: \_\_\_\_\_ Date: \_\_\_\_\_

Everlast Synthetic Products, LLC  
 1000 Wyngate Pkwy, Suite 100  
 Woodstock, GA 30189  
 (800)687-0036  
 (800)687-0048 fax  
 engineering@everlastseawalls.com