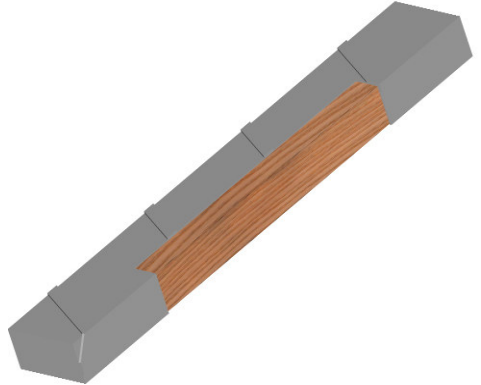




## EverWood Timber Protection System - EW 4x6

Moment of Inertia (I)	19.7 in <sup>4</sup>
Section Modulus (S)	11.2 in <sup>3</sup>
Timber Material	No. 2 Southern Pine or Better
Polymer Material	<ul style="list-style-type: none"> <li>- Marine Grade Formulated Polymer creates water-tight encasement.</li> <li>- Wrapped in tension for superior bonding to treated or untreated wood.</li> <li>- Environmentally inert "green" technology.</li> <li>- High ductility for cold weather performance and drivability.</li> <li>- Exterior ridge promotes skin friction and additional uplift capacity.</li> </ul>
Recommended Accessories	Everwood Patch Kit
Standard Lengths	16 ft., 20 ft.
Standard Colors	Clay - Grey



### Everlast Synthetic Products, LLC

1000 Wyngate Pkwy - Suite 100  
 Woodstock, Ga. 30189  
 Office: 800-687-0036  
 Fax: 800-687-0048  
[www.everlastseawalls.com](http://www.everlastseawalls.com)

Timber Properties	Design Values (Unfactored)* (psi)
Bending F <sub>b</sub>	1250
Tension Parallel to Grain F <sub>t</sub>	725
Shear Parallel to Grain F <sub>v</sub>	175
Compression Perp. To Grain F <sub>c</sub> (perp.)	565
Compression Parallel to Grain F <sub>c</sub>	1600
Modulus of Elasticity (E) (Avg.)	1,600,00
Modulus of Elasticity (E) (Min.)	580,000

Span (ft)	Allowable Uniform Loading (Shear) (lb/ft)	Allowable Uniform Loading (Bending) (lb/ft)		Allowable Uniform Loading (Deflection - Pinned Connection) (lb/ft)				Allowable Uniform Loading (Deflection - Fixed Connection) (lb/ft)			
		Pinned Connection	Fixed Connection	L/120	L/180	L/240	L/360	L/120	L/180	L/240	L/360
4	1122	587	877	---	---	---	---	---	---	---	---
5	898	374	561	---	---	---	---	---	---	---	373
6	748	259	389	---	---	---	---	---	---	---	216
7	641	190	286	---	---	---	---	---	---	---	136
8	561	146	219	---	---	---	---	---	---	136	91
9	499	115	173	---	---	---	---	---	---	96	64
10	449	93	140	---	---	---	---	---	---	70	47
11	408	77	116	---	---	---	---	---	70	52	35
12	374	64	97	---	---	---	---	---	54	40	27
13	345	55	83	---	---	---	---	---	42	32	21
14	320	47	71	---	---	---	---	---	34	25	17
15	299	41	62	---	---	---	---	---	28	21	14

\* Design Values are taken from the Southern Pine Use Guide -2009 Edition - Table 1 & 2 Dimensional Lumber & Timbers. The design values shown are unfactored and it is recommended that individual projects be evaluated for possible factor usage. The values shown are nominal and may vary. The information found in this document is believed to be true and accurate. No warranties are made as to the suitability of any Everlast product for specific applications.